

Parkview Court

£635,000

BRIK





Parkview Court

£635,000 | 2 Bed | 898 | 83.4 | D | £21,750
 LEASEHOLD | APARTMENT | SQ FT | SQ M | COUNCIL TAX | STAMP DUTY

A modern and bright, two-double bedroom, second floor flat, close to Putney Bridge and Bishops Park.

This impressive lateral flat offers almost 900 sq ft of living space, comprising a 21'10"ft (6.66m) reception room with beautiful green space views, a separate kitchen dining room, family bathroom and two double bedrooms, both with built-in storage. The main bedroom also benefits from having an en-suite shower room.

Parkview Court really is a fantastic location, with both Bishops Park and the Thames riverside walk very close to hand. You can also walk across Putney Bridge to Putney High Street, where there are a plethora of restaurants and amenities, as well as Fulham Road and Fulham High Street itself. Parsons Green is also close to hand. The closest underground station is Putney Bridge (District Line, Zone 2), which is a short walk away. EPC rating – C

- ✓ 2 bedrooms
- ✓ 2 bathroom (1 en-suite)
- ✓ Reception room
- ✓ Kitchen dining room
- ✓ Portered Block & Lift
- ✓ Leasehold
- ✓ Great view
- ✓ Close to transport
- ✓ Approx 898 sq ft (83.4 sq m)
- ✓ Council tax band - D



James Sims
 DIRECTOR
 18 YEARS EXPERIENCE
 020 7384 6790
 james@brik.co.uk







FULHAM AREA GUIDE

Bishops Park

The 'Bishop's Park' area is located on the south west border of Fulham, ideal for Tube links from Putney Bridge. The proximity of Bishops Park, Fulham Palace, the River and Putney Bridge tube go some way to offsetting the slightly out-of-the-way feel, but then many who buy here do so for that very reason. There's a more laid back feeling in the air, and parking is easier than more central areas of Fulham.

Gardens here are generally much larger than the Fulham average, and the houses are big too (over 4,000 sq ft in some cases), making this area extremely popular with families. Prices have rocketed in recent years, especially on the southern streets, but you still get more for your money than in Parsons Green.

CLOSEST:

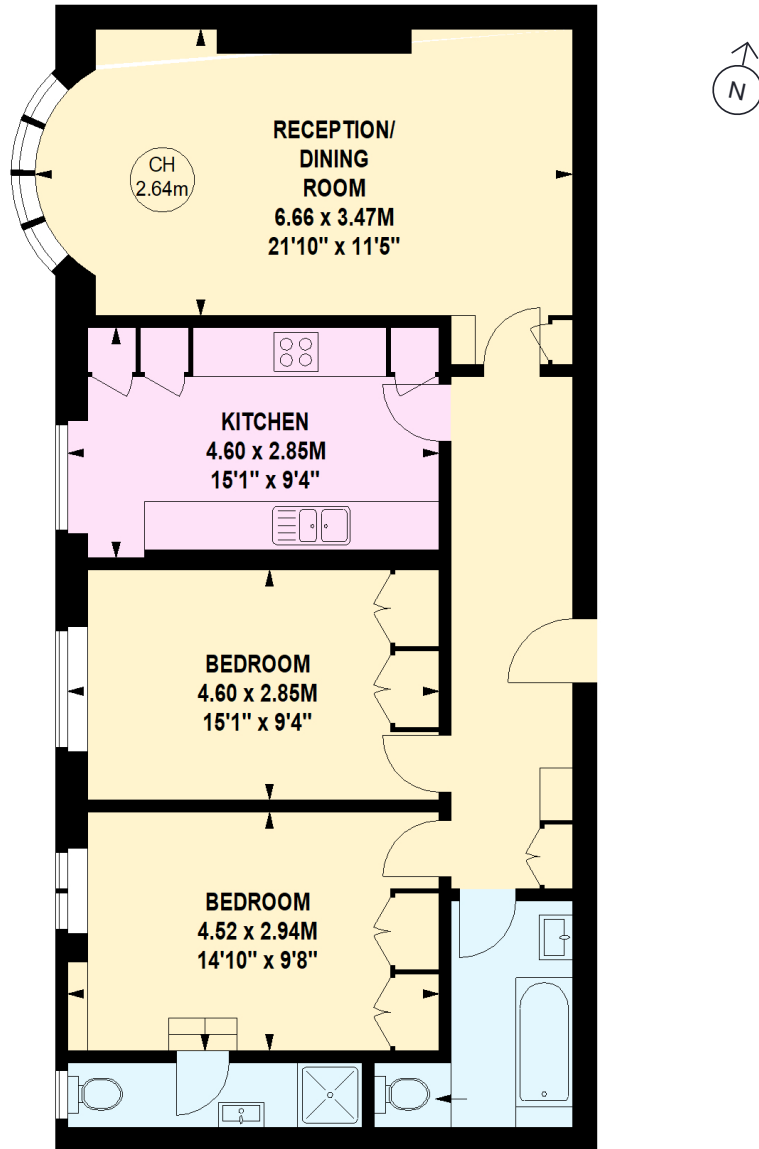
- 📍 Putney Bridge (🚶 6 mins)
- 🚆 West Brompton (🚶 36 mins)
- 📍 Bishops Park (🚶 5 mins)

KEY:

- Property location
- 'Bishops Park' area of Fulham

Read all our Fulham area guides here





Second Floor

Important notice Brik give notice that: all text, photographs and plans on these brochure are for guidance only and are not necessarily comprehensive; any areas, measurements or distances given are approximate; these details do not constitute part of an offer or contract and must not be relied upon as statements or representations of fact; it should not be assumed that the property has all the necessary planning permissions and building regulations approvals; we are not authorised to give any representations or warranties in relation to this property whatsoever; potential purchasers must satisfy themselves as to the correctness of all details by inspection or otherwise. Brik, 77 Parsons Green Lane, Fulham, London SW6 4JA Tel: 020 7384 6790 Email: hello@brik.co.uk